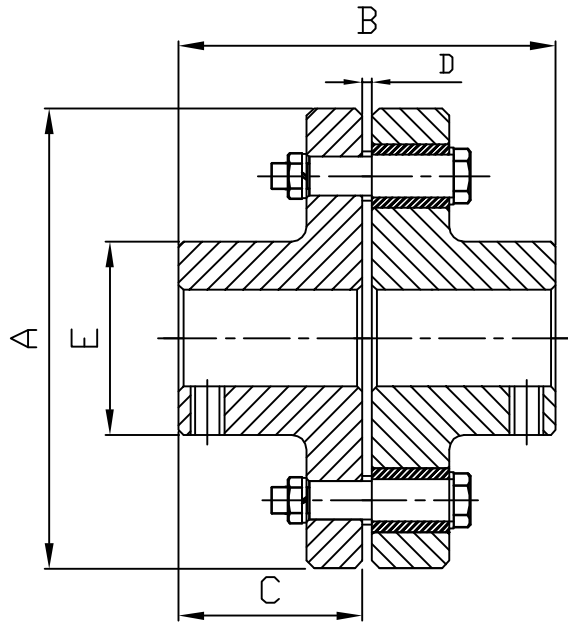


# NEW SERIES BUSH TYPE COUPLINGS



COUPLING SIZE	TORQUE (Nm)	MAX. SPEED (RPM)	BORE DIA		QTY N	A	B	C	D	E
			MIN	MAX						
FBC 1	77	6100	12.7	30	3	95	79	38	3	44
FBC 2	310	5100	12.7	35	4	114	99	48	3	51
FBC 2A	516	4400	16	45	6	130	105	51	3	67
FBC 3	621	3600	16	50	4	160	107	51	5	75
FBC 4	831	3000	20	70	4	191	125	60	5	105
FBC 4A	1241	3000	20	70	6	191	125	60	5	105
FBC 5	1662	2600	25	80	6	225	157	76	5	115
FBC 6	2359	2300	45	100	8	254	183	89	5	140
FBC 6A	2932		45	100	10	254	183	89	5	140
FBC 6B	3533		45	100	12	254	183	89	5	140
FBC 7	4154	1950	55	120	12	290	235	115	5	175
FBC 7A	5195	1900	55	125	14	300	235	115	5	185
FBC 8	5816	1850	60	135	16	310	255	125	5	200
FBC 8A	7268	1650	60	138	18	340	265	130	5	205
FBC 8B	8729	1590	65	142	12	360	276	135	6	212
FBC 9	9932	1470	70	152	13	390	316	155	6	225
FBC 9A	13274	1400	80	162	15	410	336	165	6	240
FBC 10	14420	1300	90	175	16	440	366	180	6	255
FBC 10A	18050	1200	100	185	17	480	386	190	6	270
FBC 11	23780	1080	110	195	20	530	406	200	6	285

- # ALL DIMENSIONS ARE IN MILLIMETERS.
- # MAINTENANCE IS SIMPLE. LUBRICATION NOT REQUIRED.
- # ACCOMMODATE LARGE BORE DIAMETERS.
- # GRUB SCREW IS PROVIDED ON HUB FOR LOCKING OF KEY IN FINISH BORE COUPLINGS.
- # DAMPENS THE SHOCK AND VIBRATION.
- # STANDARD RANGE IS AVAILABLE WITH CAST IRON FLANGES.
- # FOR SPECIAL APPLICATION WE CAN PROVIDE FORGED STEEL FLANGES.
- # IT IS RECOMMENDED TO USE COUPLING GUARD FOR BETTER SAFETY.